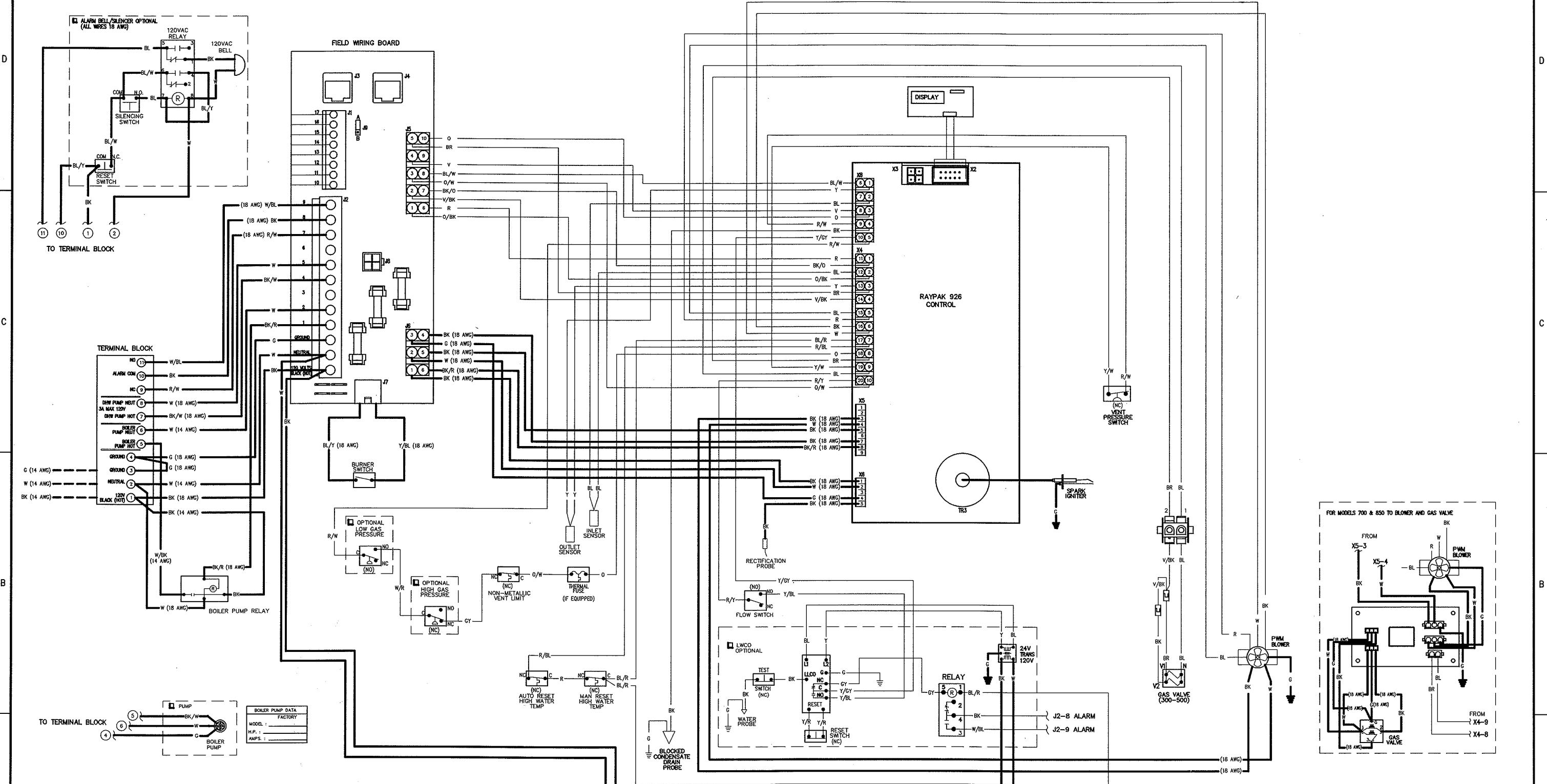


Wiring Diagrams for old style  
Xfyre and new Versa Control  
included. See below.

DEV 031-12 EC 05/23/12



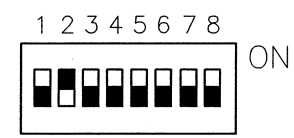
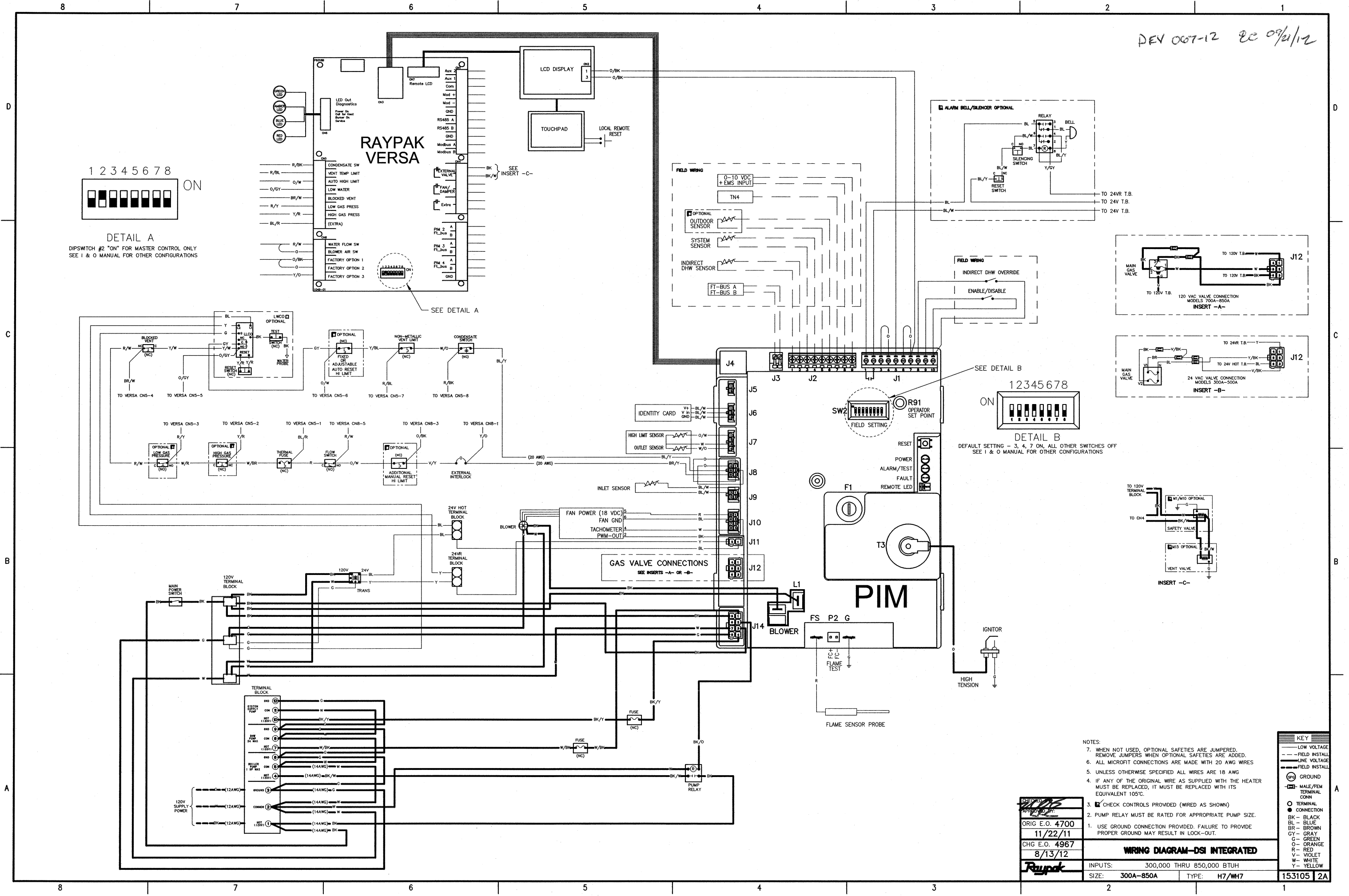
- NOTES:
1. USE GROUND CONNECTION PROVIDED. FAILURE TO PROVIDE PROPER GROUND MAY RESULT IN LOCK-OUT.
  2. PUMP CONTACTOR MUST BE RATED FOR APPROPRIATE PUMP SIZE.
  3. CHECK CONTROLS PROVIDED (WIRED AS SHOWN).
  4. IF ANY OF THE ORIGINAL WIRE AS SUPPLIED WITH THE HEATER MUST BE REPLACED, IT MUST BE REPLACED WITH ITS EQUIVALENT 105°C.
  5. ALL INTERLOCK SWITCHES MUST BE WIRED IN SERIES.
  6. CORRECT OPERATIONAL STATUS OF SAFETIES SHOWN AS ( )
  7. SOME COMPONENTS MAY INCLUDE ADDITIONAL WIRING THAT IS NOT INCLUDED IN CIRCUIT.

| KEY   |               |
|-------|---------------|
| —     | LOW VOLTAGE   |
| - - - | FIELD INSTALL |
| ---   | LINE VOLTAGE  |
| ---   | FIELD INSTALL |
| ⊕     | GROUND        |
| ●     | CONNECTION    |
| BK    | BLACK         |
| BL    | BLUE          |
| BR    | BROWN         |
| GY    | GRAY          |
| G     | GREEN         |
| O     | ORANGE        |
| R     | RED           |
| V     | VIOLET        |
| W     | WHITE         |
| Y     | YELLOW        |

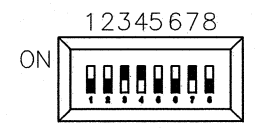
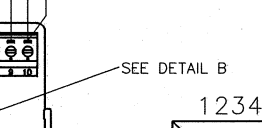
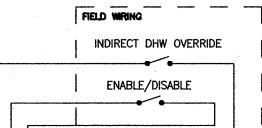
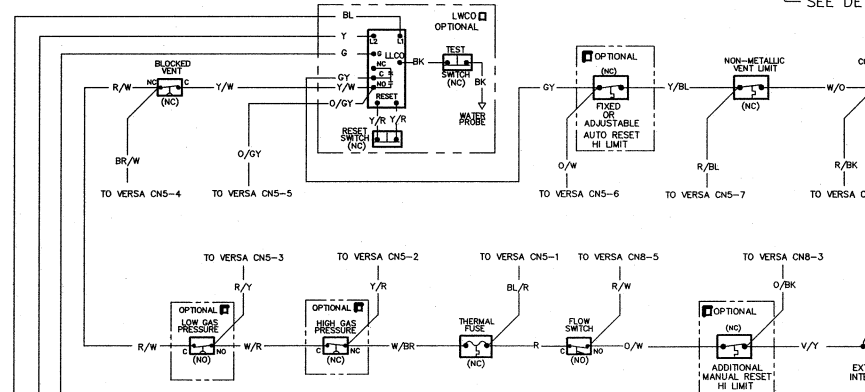
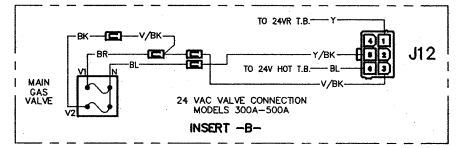
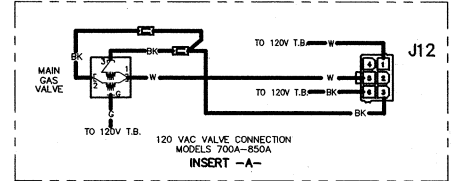
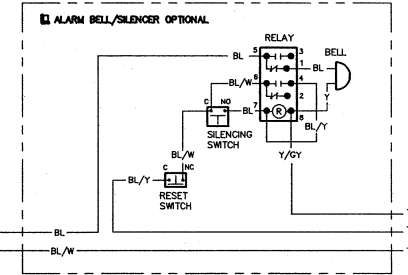
|                                   |              |  |                  |
|-----------------------------------|--------------|--|------------------|
| CHECKED BY:                       | APPROVED BY: | ORIG. E.O. 4350                          | 5/23/12          |
| CHG. E.O. 4835                    | 5/23/12      | <b>WIRING DIAGRAM-DSI<br/>MODULATING</b> |                  |
| INPUTS: 300,000 THRU 850,000 BTUH |              | SIZE: 300-850                            | TYPE: H7/WH7     |
|                                   |              |  | <b>152961 7C</b> |

| BOILER PUMP DATA |          |
|------------------|----------|
| MODEL:           | FACTORY: |
| H.P.:            |          |
| AMPS:            |          |

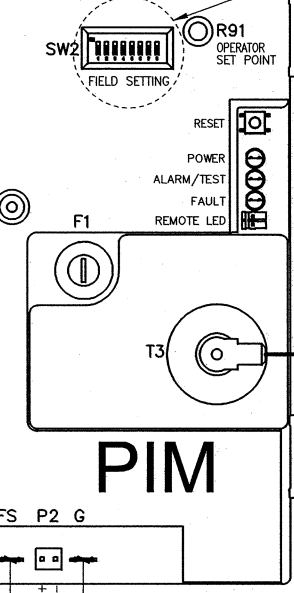
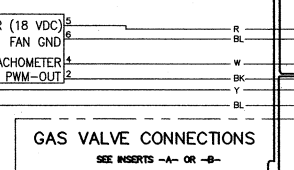
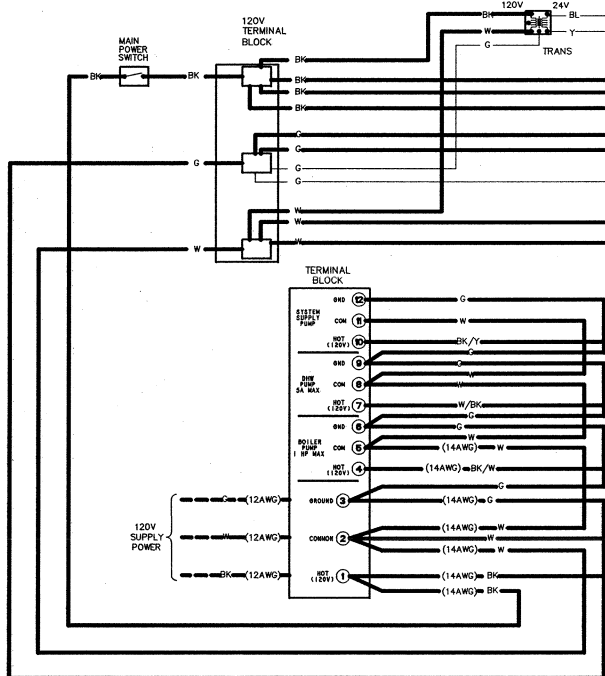
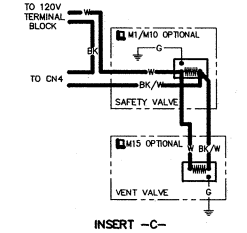
REV 007-12 EC 09/2/12



**DETAIL A**  
DIPSWITCH #2 "ON" FOR MASTER CONTROL ONLY  
SEE I & O MANUAL FOR OTHER CONFIGURATIONS



**DETAIL B**  
DEFAULT SETTING - 3, 4, 7 ON, ALL OTHER SWITCHES OFF  
SEE I & O MANUAL FOR OTHER CONFIGURATIONS



- NOTES:
- WHEN NOT USED, OPTIONAL SAFETIES ARE JUMPED. REMOVE JUMPERS WHEN OPTIONAL SAFETIES ARE ADDED.
  - ALL MICROFIT CONNECTIONS ARE MADE WITH 20 AWG WIRES.
  - UNLESS OTHERWISE SPECIFIED ALL WIRES ARE 18 AWG.
  - IF ANY OF THE ORIGINAL WIRE AS SUPPLIED WITH THE HEATER MUST BE REPLACED, IT MUST BE REPLACED WITH ITS EQUIVALENT 105°C.
  - CHECK CONTROLS PROVIDED (WIRED AS SHOWN).
  - PUMP RELAY MUST BE RATED FOR APPROPRIATE PUMP SIZE.
  - USE GROUND CONNECTION PROVIDED. FAILURE TO PROVIDE PROPER GROUND MAY RESULT IN LOCK-OUT.

APPROVED BY: [Signature]  
 ORIG E.O. 4700  
 11/22/11  
 CHG E.O. 4967  
 8/13/12  
 Raypak

**WIRING DIAGRAM-DSI INTEGRATED**  
 INPUTS: 300,000 THRU 850,000 BTUH  
 SIZE: 300A-850A TYPE: H7/WH7

| KEY |                         |
|-----|-------------------------|
| --- | LOW VOLTAGE             |
| --- | FIELD INSTALL           |
| --- | LINE VOLTAGE            |
| --- | FIELD INSTALL           |
| ⊕   | GROUND                  |
| ⊕   | MALE/TEMP TERMINAL CONN |
| ○   | TERMINAL CONNECTION     |
| BK  | BLACK                   |
| BL  | BLUE                    |
| BR  | BROWN                   |
| GY  | GRAY                    |
| G   | GREEN                   |
| O   | ORANGE                  |
| R   | RED                     |
| V   | VIOLET                  |
| W   | WHITE                   |
| Y   | YELLOW                  |

153105 2A