

# Delta Limited™ - Type WH

Water Heaters  
Models 989B-2339B

Job: \_\_\_\_\_

Engineer: \_\_\_\_\_

Contractor: \_\_\_\_\_

Prepared By: \_\_\_\_\_ Date: \_\_\_\_\_

Model: WH-1529B Indoor/Outdoor: Indoor

MBTUH Input: 1,530

**100% Factory Fire Tested**

**Efficiency: 85%**

**Maximum Outlet Temperature: 210°F**

**Minimum Non-Condensing Inlet Temperature: 105°F**

**Thermal Shock Proof Heat Exchanger**

**Limited Twenty-Year Thermal Shock Warranty**

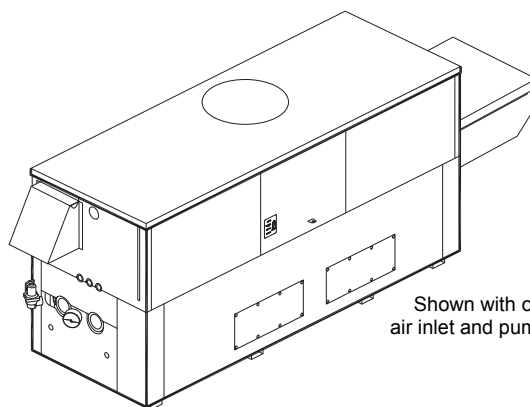
**Limited Five-Year Heat Exchanger Warranty**

**PolyTuf Powder Coated Cabinet**

**No Combustible Floor Shield Required**

**Fan-Assisted**

**Patented Burner Security Blanket**



Shown with outdoor air inlet and pump covers



Proudly Made in the U.S.A.

## Heat Exchanger

- HLW Stamp
- Headers
  - Glass-Lined Cast Iron – Standard
  - Bronze – Option A-1
- ASME Inspected and Stamped  
160 PSIG Working Pressure
- National Board Approved
- Fin Tubing
  - Copper – Standard
  - Cupro Nickel – Option A-3
- ASME Steel Tube Sheet
- Silicone High Temp O-Rings
- ASME Pressure Relief Valve
  - 125 PSIG – Standard
  - \_\_\_\_\_ PSIG – Optional
- Temperature and Pressure Gauge
- Water Connections
  - Left – Standard
  - Right – Option A-6

## Controls

- 120V, 60Hz, 1Ø Power Supply
- 120/24V 60Hz Transformer
- 100% Shut-Off/Lockout
- Hot Surface Ignition
- Remote Flame Sensor
- High Limit Control, Manual Reset
- On/Off Power Switch
- Manual Shut-Off, Front-Mounted Switch
- Flow Switch
- Blocked Vent Pressure Switch
- Combustion Air Proving Switch
- Pump Time Delay Relay
- Status Display Lights

## Gas Train

- Manual Gas Shut-Off Valve(s)
- Combination Valves
- Low Gas Pressure Switch, Manual
- Firing Mode
  - 2-Stage: Model 989B
  - 3-Stage: Model 1259B
  - 4-Stage: Models 1529B-2339B
- Fuel
  - Natural Gas
  - Propane Gas
- Design Certified -  
ANSI Z21.10.3/CSA 4.3

## Burner

- Ultra-Low NOx: Less than 20 PPM

## Construction

- Indoor/Outdoor Construction
- Enclosed Front Controls
- AB-1953 Verified

## Venting

- Vent Location
  - Top, Outdoor – Standard
  - Top, Indoor – Option D-20
  - Rear – Option D-14
- Vent Termination Cap
  - Outdoor D-11
  - Indoor, Horizontal D-15
  - Indoor, Vertical (by others)
- Extractor – Optional
  - By others
  - Not required

## Temperature Controls

- B-2 Tankstat, Single-Stage  
(100-200°F)
- B-3 Tankstat, 2-Stage (100-200°F)
- B-25 Raytemp Digital Controller,  
4-Stage
- B-\_\_\_ TempTracker Digital Controller,  
2-Stage (Loose)
- B-21 TempTracker Digital Controller,  
4-Stage (Loose)

## Options

- C-6 Ignition Module, Manual Reset
- F-10 Low Water Cut-Off, Remote  
Probe
- I-1 High Limit Control, Auto Reset  
Pump: \_\_\_\_\_ HP, 120V,  
1Ø, 60Hz  
Water Hardness: \_\_\_\_\_ GPG
  - Cast Iron  Bronze
  - Mounted  Loose
  - Front  Rear
- P-26 Cold Water Start (See 2000.48)
- S-2 High Gas Pressure Switch,  
Manual
- X-1 SureRack™ Kit
- X-2 SureRack Add-on
- \_\_\_\_\_

## Regulatory Agency Requirements

\_\_\_\_\_

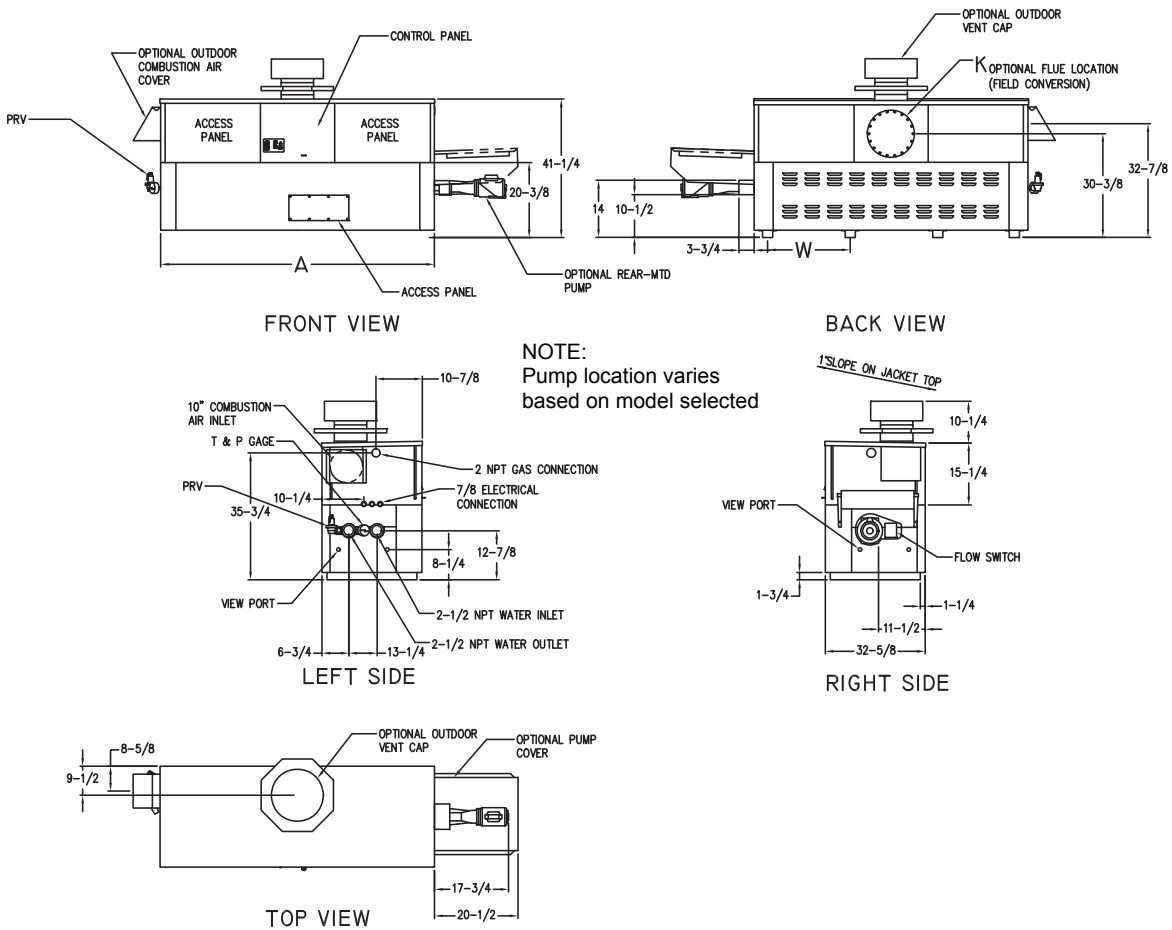


Delta Limited models not approved for use in California

**Raypak®**  
A Rheem® Company

# Delta Limited – Type WH Models 989B-2339B

Model WH-1529B



Model	System Flow and Head Loss														
	0-4 Grains Per Gallon					5-15 Grains Per Gallon					16-25** Grains Per Gallon				
	ΔT (°F)	GPM	ΔP (ft wc)	MTS (in)	SHL (ft wc)	ΔT (°F)	GPM	ΔP (ft wc)	MTS (in)	SHL (ft wc)	ΔT (°F)	GPM	ΔP (ft wc)	MTS (in)	SHL (ft wc)
989B	28	60	2.7	2-1/2	5.2	17	98	7.3	2-1/2	13.3	13	132	13.1	2-1/2	23.6
1259B	30	72	4.4	2-1/2	7.9	19	115	11.3	2-1/2	19.4	16	132	14.8	2-1/2	25.3
1529B	30	86	7.1	2-1/2	11.9	22	120	13.7	2-1/2	22.5	20	132	16.5	2-1/2	27.0
1799B	28	110	12.7	2-1/2	20.2	26	120	15.1	2-1/2	23.9	23	132	18.3	2-1/2	28.7
1999B	30	112	13.9	2-1/2	21.6	26	132	19.0	2-1/2	29.5	26	132	19.0	2-1/2	29.5
2069B	31	112	13.9	2-1/2	21.6	27	132	19.0	2-1/2	29.5	27	132	19.0	2-1/2	29.5
2339B	33	120	17.8	2-1/2	26.5	31	130	20.8	2-1/2	30.9	30	132	21.4	2-1/2	31.8

SHL includes 50 ft of tubing each way (100 total)

\*\* Must use optional cupro-nickel tubes. For hardness exceeding 25 GPG, must use water softener.

### SPECIFICATIONS

Model	MBTUH		Firing Stages	A Width	H NPT	K	W	Amp Draw*	Approx. Shipping Wt. Lbs.
	Input	Output							
989B	990	842	2	57-1/8	2-1/2	10	16-13/16	< 12	900
1259B	1260	1071	3	68-1/2	2-1/2	12	20-9/16	< 12	1010
1529B	1530	1301	4	79-7/8	2-1/2	12	24-3/8	< 12	1225
1799B	1800	1530	4	91-1/8	2-1/2	14	28-1/8	< 12	1350
1999B**	1999	1699	4	102-1/2	2-1/2	14	31-15/16	< 12	1450
2069B	2070	1760	4	102-1/2	2-1/2	14	31-15/16	< 12	1450
2339B	2340	1989	4	113-7/8	2-1/2	16	35-11/16	< 12	1520

Dimensions are in inches.

\* Pump not included

\*\* Natural Gas Only

### RECOVERY RATES (GPH)

Model	Temperature Rise in °F								
	20°	30°	40°	50°	60°	70°	80°	90°	100°
989B	5100	3400	2550	2040	1700	1457	1275	1133	1020
1259B	6491	4327	3245	2596	2164	1855	1623	1442	1298
1529B	7882	5255	3941	3153	2627	2252	1970	1752	1576
1799B	9273	6182	4636	3709	3091	2649	2318	2061	1855
1999B	10298	6865	5149	4119	3433	2942	2574	2288	2060
2069B	10664	7109	5332	4265	3555	3047	2666	2370	2133
2339B	12055	8036	6027	4822	4018	3444	3014	2679	2411

NOTES 1. Rates shown are for natural or propane gas and elevations up to 4,500 feet. For installations above 4,500 feet, please contact manufacturer.  
2. Recommended natural gas supply pressure is 7.0 – 10.5 in. WC. Recommended propane gas supply pressure is 11.0 – 13.0 in. WC.

Raypak, Inc. • 2151 Eastman Avenue, Oxnard, CA 93030 • (805) 278-5300 • Fax (800) 872-9725 • www.raypak.com

Catalog No.: 3500.321A

Effective: 07-21-10

Replaces: 09-15-07