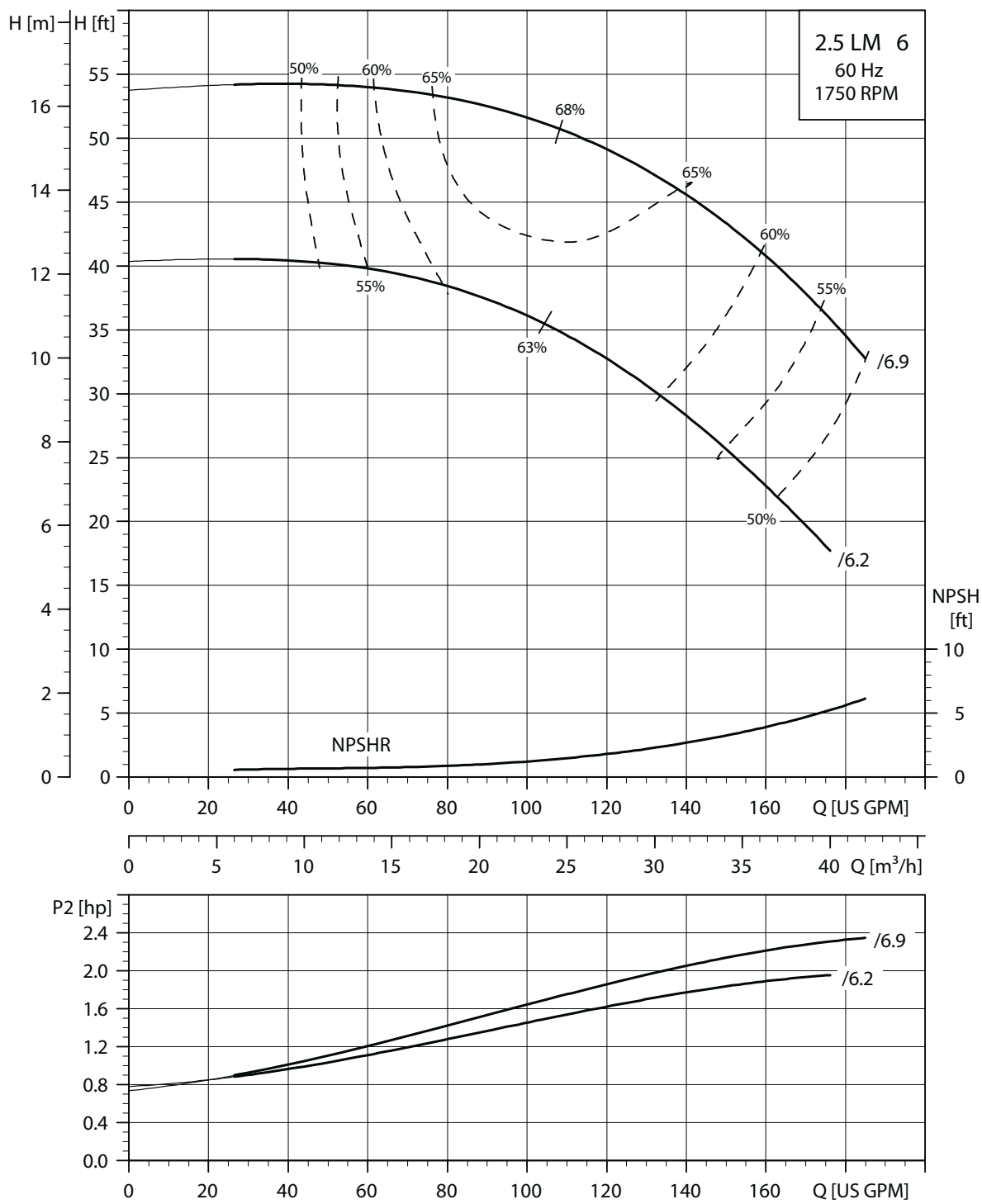
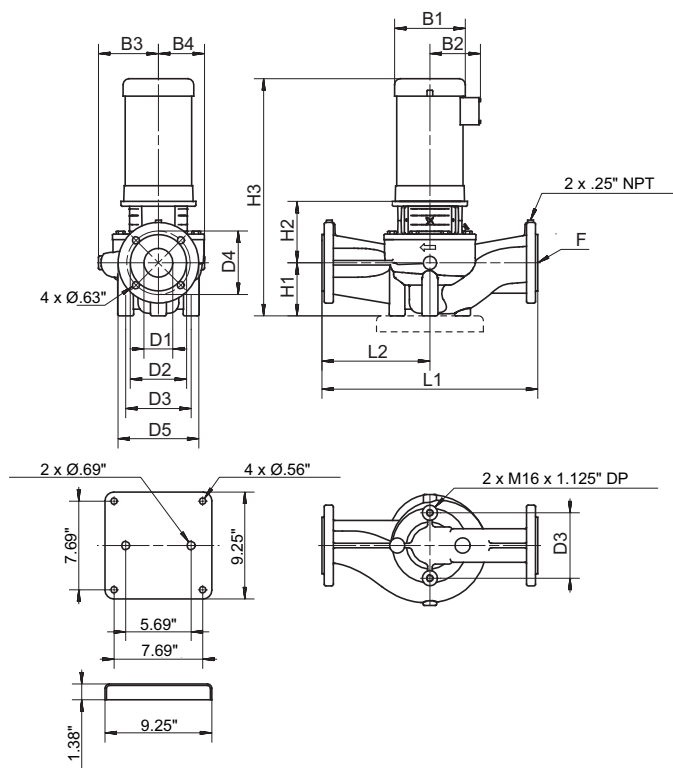


### 2.5 LM 6/XX



TM02 4967 0211



TM02 4964 0211

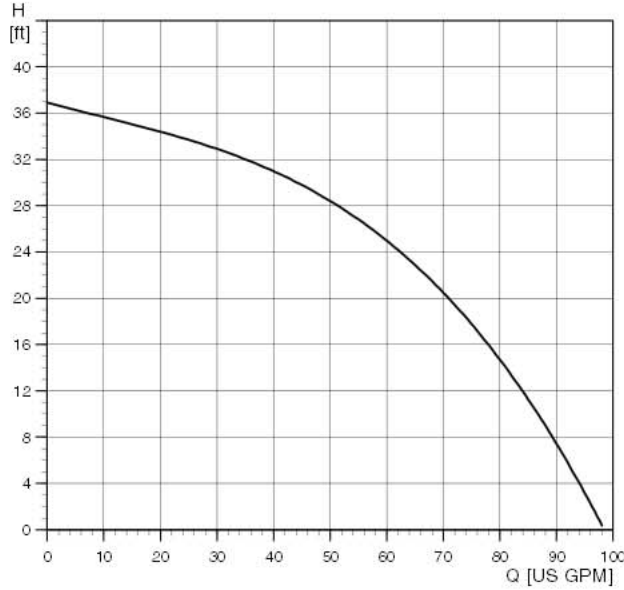
## Electrical data, weights and dimensions

Pump type	Hp	Mtr S.F.	Ph	NEMA Frame size	Volts	Dimensions [inches (mm)]												Ship. wt. [lbs]	
						D1	D3	D4	D5	B1	B2	B3	B4	H1	H2	H3	L1		L2
2.5 LM 6/6.2	2	1.15	1	56C	115/230	2.50 (64)	5.69 (145)	5.50 (140)	7.00 (178)	7.19 (183)	5.75 (146)	6.18 (157)	5.94 (151)	4.56 (126)	5.50 (140)	22.13 (562)	19.00 (483)	9.50 (241)	163
			3	56C	208-230/ 460, 575*	2.50 (64)	5.69 (145)	5.50 (140)	7.00 (178)	7.19 (183)	5.75 (146)	6.18 (157)	5.94 (151)	4.56 (126)	5.50 (140)	21.23 (539)	19.00 (483)	9.50 (241)	159
2.5 LM 6/6.9	3	1.15	1	182TC	115/230	2.50 (64)	5.69 (145)	5.50 (140)	7.00 (178)	7.19 (183)	5.75 (146)	6.18 (157)	5.94 (151)	4.56 (126)	6.06 (154)	24.30 (617)	19.00 (483)	9.50 (241)	202
			3	182TC	208-230/ 460, 575*	2.50 (64)	5.69 (145)	5.50 (140)	7.00 (178)	7.19 (183)	5.75 (146)	6.18 (157)	5.94 (151)	4.56 (126)	6.06 (154)	24.30 (617)	19.00 (483)	9.50 (241)	180

## Technical data

Nominal flow range	30 - 185 U.S. gpm
Min. flow rate	15 U.S. gpm
Head range	18 - 54 ft
Motors	TEFC (standard) / ODP (optional)
Temp. range [°F (°C)]	+5° to +250° (-15° to +121°)
Max. working pressure	175 psi
Flanges:	2 1/2" ANSI 125 lb. F.F.

\*575V available on request.

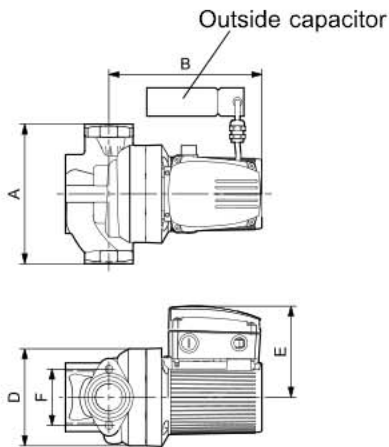


TMD3 5951 3806

Flow range: 0-98 U.S. gpm  
 Head range: 0-37 feet  
 Motors: 2-pole, single-phase  
 Max. liquid temperature: 230 °F (110 °C)  
 Min. liquid temperature: 14 °F (-10 °C)  
 Max. system pressure: 145 psi  
 Closed system

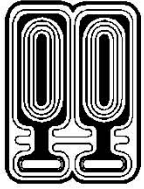
Model	Volts	Amps	Watts	Hp	Capacitor
UP 43-110F	115	5.1	590	3/4	60µF
	230	2.7	590	3/4	60µF

UP 43-110F



TMD3 8818 2507

Model type	Product number		A	B	D	E	F	Connection type and size	Shipping weight [lbs]
	115 V	230 V							
UP 43-110F	96439643	96439643	8 1/2	9 5/8	4 15/16	5 4/7	-	1 1/2"	34.2



SINCE 1908  
**wessels**  
 company

**SUBMITTAL**

**GMP-SERIES**

GLYMATIC GLYCOL MAKE-UP PACKAGE

Models: G-6 thru G-18

Submittal Sheet No. I-1101A

Date: 7/12

Job Name _____	Submitted By _____	Date _____
Location _____	Approved By _____	Date _____
_____	Order No. _____	Date _____
Engineer _____	Notes _____	
Contractor _____	_____	
Sales Rep. _____	_____	

**Description**

The GMP is fully automated and autonomous. Comes complete with 110V pressurization pump with integral pressure control, pressure reducing valve and gauge, and translucent polyethylene solution container with lid designed to accommodate relief piping.

**Performance Limitations**

Maximum Temperature: 130°F  
 Factory Discharge Pressure Setting: 12 PSIG  
 Maximum Discharge Pressure: 60 PSIG

**Available Options**

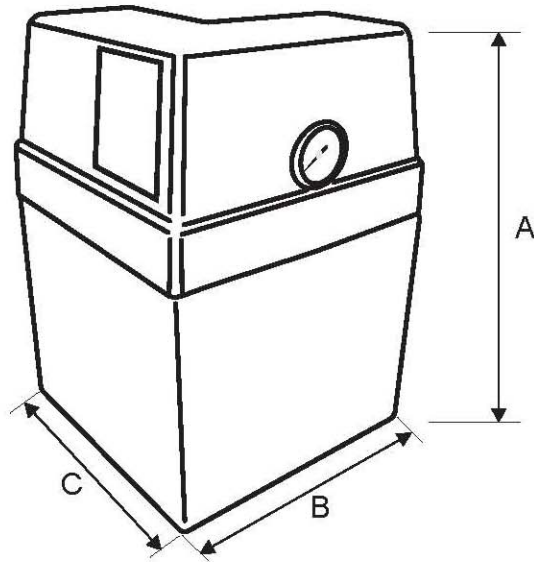
- Alarm kit with panel and float
- Wall mounting shelf for GMP-6

Model Number	Part Numer	Tank Volume (Gallons)	Tagging Information	Quantity
GMP-6	07001006	6		
GMP-18	07001018	18		

**Typical Specification**

The contractor shall supply and install, as indicated on the plans and in the specifications, a prefabricated, automatic and autonomous make-up package for each glycol system. The package shall be designed to occupy a minimum amount of floor space to operate on a 110V motor, 60 Hz electrical circuit, and to maintain a fill pressure in the glycol system of \_\_\_\_\_psig. The pressurization assembly shall consist of a pressurization pump with pressure controls, a PRV, and a pressure gauge to continuously monitor PRV outlet pressure. The pressurization assembly shall be mounted on the translucent polyethylene solution container, complete with cover

Each glycol make-up package shall be model GMP - \_\_\_\_\_ as manufactured by Wessels Company or approved equal.



G-6 thru G-18

### Dimensions & Weights

Model Number	Dimensions In Inches			System Connection	Approx Shipping Weight (lbs)
	A	B	C		
GMP-6	17 1/2	12	12	1/2" NPT	16
GMP-18	39 1/4				25