

DEMA NORMALLY OPEN SOLENOID VALVES

MODELS O412P, OA414P, OA416P, & OA418P

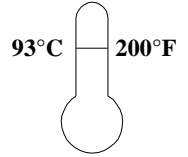
INSTALLATION INSTRUCTIONS

1. LINE STRAINER:

A strainer, with an 80-mesh or finer screen, should be installed in the line ahead of the solenoid valve. This will assure tight seating and reliable closing action.

2. FLUIDS:

Valves are intended for water, air, light oil, and other noncorrosive fluids. They should *not* be used for gasoline and other hazardous or explosive fluids. Maximum fluid temperature is 200° F (93.3°C). Ambient temperature shall not exceed 120°F (48.8°C).



WARNING: NOT FOR USE WITH HAZARDOUS OR CORROSIVE OR EXPLOSIVE FLUIDS.

3. INSTALLATION:

Dema valves may be installed in either horizontal or vertical lines and in any position other than with the coil lower than the body.

ELECTRICAL DATA

WATTS AC	VOLTS AC	AMPERES				DC		
		INRUSH		HOLDING		RATED WATTS	VOLTS	AMP
		50 Hz	60 Hz	50 Hz	60 Hz			
15	24	3.7	3.0	1.6	1.2	18	12	1.5
	120	0.73	0.60	0.33	0.24		24	0.7
	208	0.31	0.26	0.12	0.09		32	0.6
	240	0.36	0.30	1.6	0.12		115	0.15

4. SERVICING:

- A. Failure to close.
 - 1) No power to low voltage.
 - 2) Open Circuit.
 - 3) Burned-out coil (usually due to wrong voltage. See stamping opposite junction box).
 - 4) Pressure differential too high (see M.O.P.D. on name plate).
 - 5) Moving parts jammed by dirt or damaged solenoid stainless steel tube
- B. Failure to open.
 - 1) Coil still energized.
 - 2) Moving parts jammed by dirt or damaged solenoid stainless steel tube.

RETURNS: **NO MERCHANDISE MAY BE RETURNED FOR CREDIT WITHOUT DEMA’S WRITTEN PERMISSION. RETURN MERCHANDISE AUTHORIZATION NUMBER REQUIRED IN ADVANCE OF RETURN.**

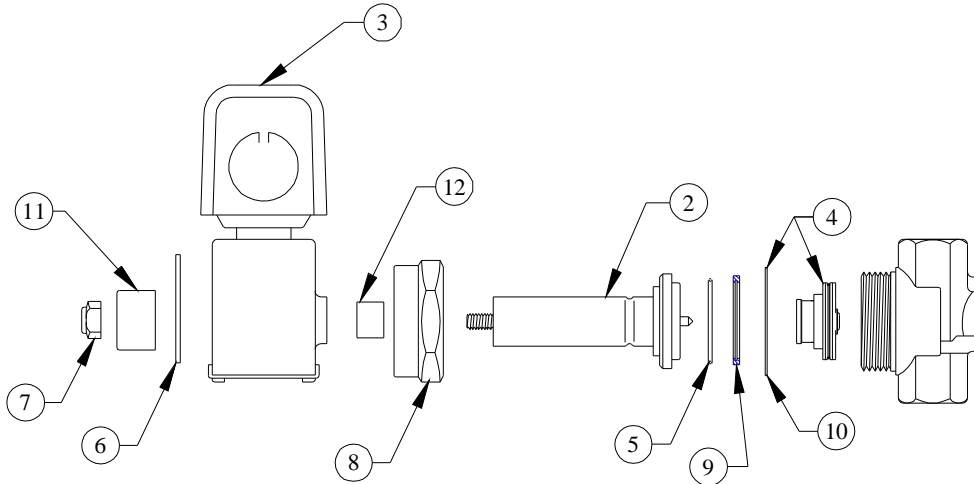
WARRANTY: DEMA products are warranted against defective material and workmanship under normal use and service for one year from the date of manufacture. This limited warranty does not apply to any products which have a normal life shorter than one year or failure and damage caused by chemicals, corrosion, improper voltage supply, physical abuse, or misapplication. Rubber and synthetic rubber parts such as “o”- rings, diaphragms, squeeze tubing and gaskets are considered expendable and are not covered under warranty. This warranty is extended only to the original buyer of DEMA products. If products are altered or repaired without prior approval of DEMA, this warranty will be void.

Defective units or parts should be returned to the factory with transportation prepaid. If inspection shows them to be defective, they will be repaired or replaced without charge, F.O.B. factory. DEMA assumes no liability for damages. Return merchandise authorization number, to return units for repair or replacement, must be granted in advance of return.

DEMA NORMALLY OPEN SOLENOID VALVES

MODELS O412P, OA414P, OA416P, & OA418P

INSTALLATION INSTRUCTIONS



NO.	PART NO.	DESCRIPTION	VALVE MODEL NUMBER			
			O412P	OA414P	OA416P	OA418P
2	41-7-15	Valve Operator Assy.	*			
	41-7-16	Valve Operator Assy.		*		
	41-7-17	Valve Operator Assy.			*	
	41-7-18	Valve Operator Assy.				*
3	O41-9-2	Normally Open Coil Assy. (Specify Voltage)	*	*	*	*
4	41-3-1	Piston Assembly (does not have piston ring)	*			
	41-11-8	Piston Assy. With Ring & Backup Spring		*		
	41-11-9	Piston Assy. With Ring & Backup Spring			*	
	41-11-10	Piston Assy. With Ring & Backup Spring				*
5	41-12-1	Tetraseal Ring		*		
	41-12-2	Tetraseal Ring			*	
	41-12-3	Tetraseal Ring				*
	41-12-5	Tetraseal Ring	*			
6	41-13-18	Nameplate	*	*	*	*
7	41-14-3	Top Plug Nut	*	*	*	*
8	41-17-1	Enclosing Tube Locknut	*			
	41-17-2	Enclosing Tube Locknut		*		
	41-17-3	Enclosing Tube Locknut			*	
	41-17-4	Enclosing Tube Locknut				*
9	41-19-1	Piston Ring		*		
	41-19-3	Piston Ring			*	
	41-19-4	Piston Ring				*
10	41-20-2	Backup Spring		*		
	41-20-3	Backup Spring			*	
	41-20-4	Backup Spring				*
11	41-22-1	Spacer Cup	*			
	41-22-2	Spacer Cup		*	*	*
12	41-23-1	Spacer	*			
	41-23-2	Spacer		*	*	
	41-22-3	Spacer				*